

For Lease

2345 Murray Avenue

Pittsburgh, PA 15217



Premises

- 2nd Floor - 1,110 SF

Features

- Class "A" office/retail building
- Excellent access and visibility, just steps from the Squirrel Hill interchange off of I-376
- Office – Full service lease includes utilities and cleaning
- ADA compliant and environmentally clean building
- Attractive rental rates and build-out packages
- Free off-street parking

For more information or to arrange for a tour please contact:

Jeffrey A. Deitrick, SIOR

412.261.0200, ext. 473
jdeitrick@oxfordrealtyservices.com

Michael R. Daniels

412.261.0200, ext. 480
mdaniels@oxfordrealtyservices.com



OXFORD
REALTY SERVICES

Office | Industrial | Retail | Investment | Consulting

Oxford Realty Services

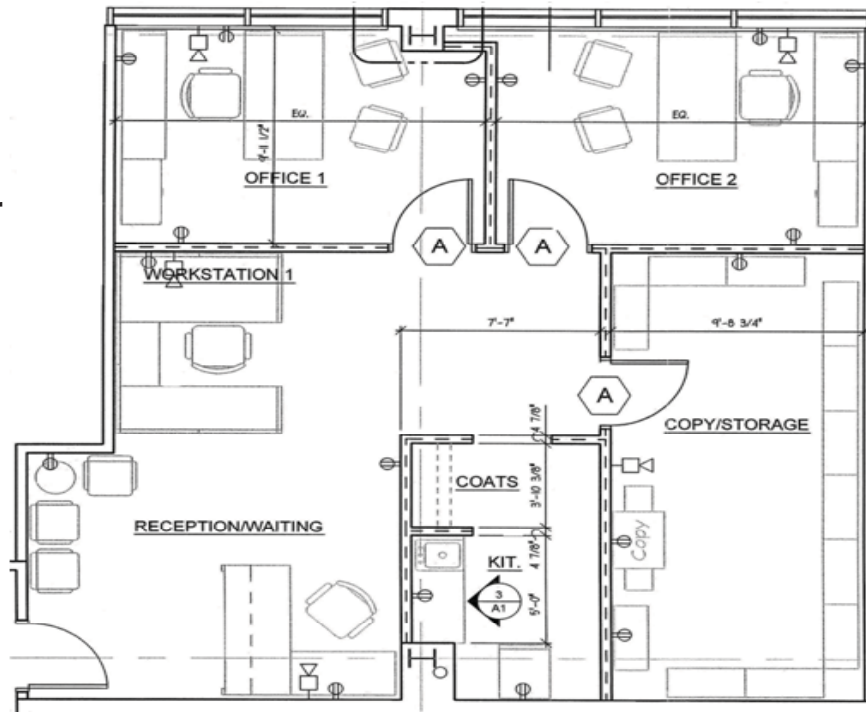
One Oxford Centre | 301 Grant Street | Suite 400

Pittsburgh, PA, 15219

www.oxfordrealtyservices.com

2345 Murray Avenue, Pittsburgh, PA 15217

1,110 SF - 2nd Floor



Although all information furnished regarding property for sale, rental or financing is from sources deemed reliable, such information has not been verified, and no express representation is made nor is any to be implied as to the accuracy thereof, and it is submitted subject to errors, omissions, change of price, rental or other conditions, prior sale, lease or financing, or withdrawal without notice. Rental terms and all dimensions are approximate and specifications are subject to change without notice. Oxford Realty Services, Inc., an independent real estate services company.



Office | Industrial | Retail | Investment | Consulting