

For Lease

Towne Centre Offices

1789 South Braddock Avenue, Pittsburgh, PA 15218



Premises

2nd Floor – 1,773 RSF

3rd Floor – 514 RSF / 828 RSF / 1,797 RSF

5th Floor – 1,005 RSF / 1,384 RSF / 1,438 RSF / 1,718 RSF

Features

- The offices are conveniently located at the Edgewood/ Swissvale exit just off of the Parkway East (I-376)
- To the East, Monroeville and the PA Turnpike (I-76) are only 6 miles away and to the West, Pittsburgh's CBD is only 7 miles away
- Flexible floor plans are available to fit your needs
- Card-access security system ensures your entrance into the building 24 hours a day, 7 days a week
- Ample free parking
- On-site property management assures you 365-day-a-year service and maintenance

For more information or to arrange for a tour please contact:

Jeffrey A. Deitrick, SIOR

412.261.0200, ext. 473

jdeitrick@oxfordrealtyservices.com



OXFORD
REALTY SERVICES

Office | Industrial | Retail | Investment | Consulting

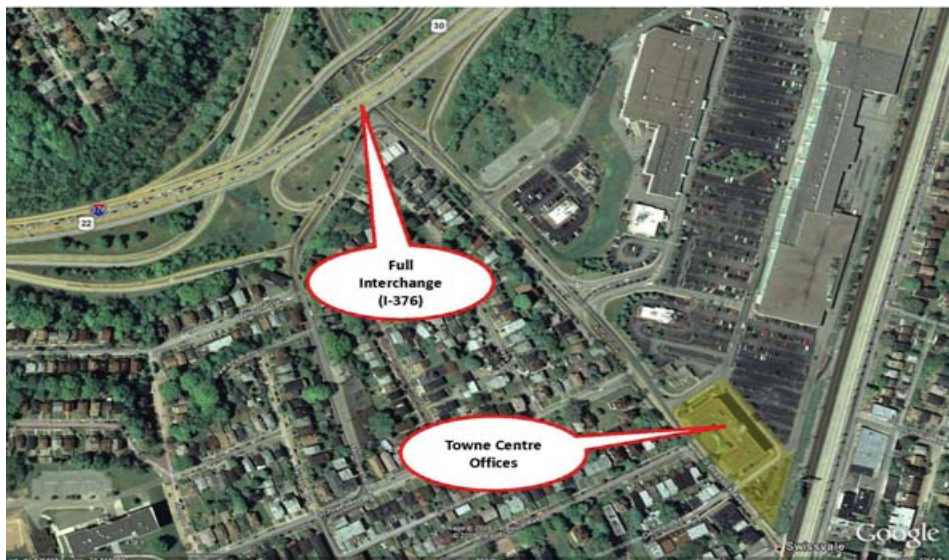
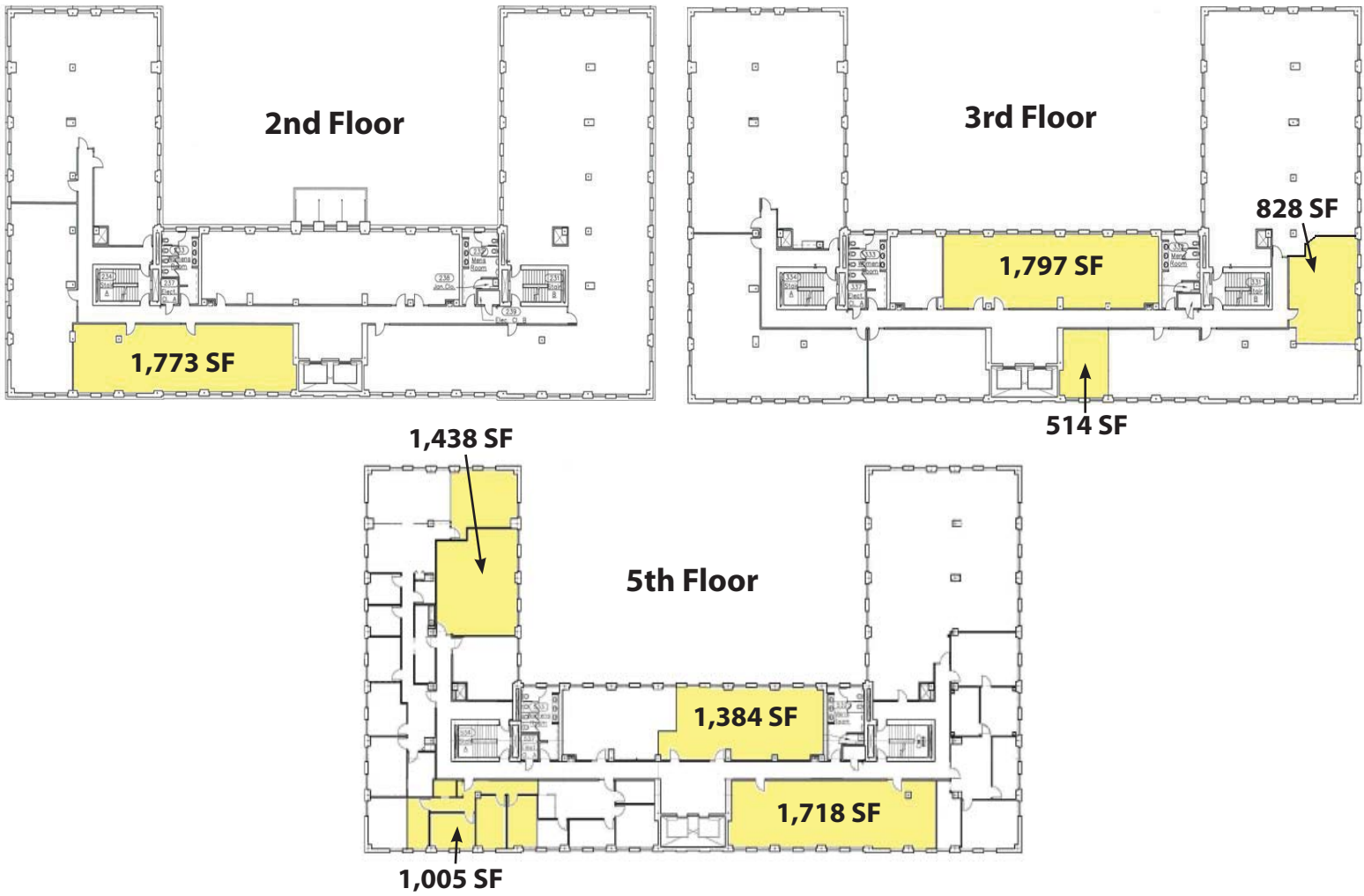
Oxford Realty Services

One Oxford Centre | 301 Grant Street | Suite 400

Pittsburgh, PA, 15219

www.oxfordrealtyservices.com

Towne Centre Offices, 1789 South Braddock Avenue, Pittsburgh, PA



Although all information furnished regarding property for sale, rental or financing is from sources deemed reliable, such information has not been verified, and no express representation is made nor is any to be implied as to the accuracy thereof, and it is submitted subject to errors, omissions, change of price, rental or other conditions, prior sale, lease or financing, or withdrawal without notice. Rental terms and all dimensions are approximate and specifications are subject to change without notice. Oxford Realty Services, Inc., an independent real estate services company.



Office | Industrial | Retail | Investment | Consulting