

# For Lease

## 5.4 Acres

Field Club Commons, 3300-3350 Wilmington Road, New Castle, PA 16105



### Land Area Available for Development

5.4 Acres - Shovel Ready  
Zoned C-2

### Features

- Field Club Commons Shopping Center is a community shopping center located in Neshannock Township, the strongest demographic market within Lawrence County
- Co-tenants include Tuesday Morning, Peebles, Ollie's Bargain Outlet, Save-A-Lot, Edward Jones, Northwest Financial, Bunny's Cardsmart, Curves, Dollar General, Bobbie's Salon, New Mandarin Inn, and Greenville Savings Bank. Out-parcels include Perkins, ESB Bank, Subway, EZ Kleen Car Wash
- Adjacent to the largest and highest volume Giant Eagle Supermarket in Lawrence County
- Average daily traffic on Wilmington Road is 18,500 cars

### Demographics

|                          | 5 Mile   | 7 Mile   | 10 Mile  |
|--------------------------|----------|----------|----------|
| Population               | 42,079   | 59,545   | 82,405   |
| Average Household Income | \$53,457 | \$52,745 | \$53,108 |

For more information,  
please contact:

#### Richard A. Crimone

Sr. Vice President, Retail Services  
412.261.0200 ext. 460  
rcrimone@oxfordrealtyservices.com

#### Arthur J. DiDonato, Jr.

Sr. Vice President/Retail Brokerage  
412.261.0200 ext. 436  
adidonato@oxfordrealtyservices.com



**OXFORD**  
**REALTY SERVICES**

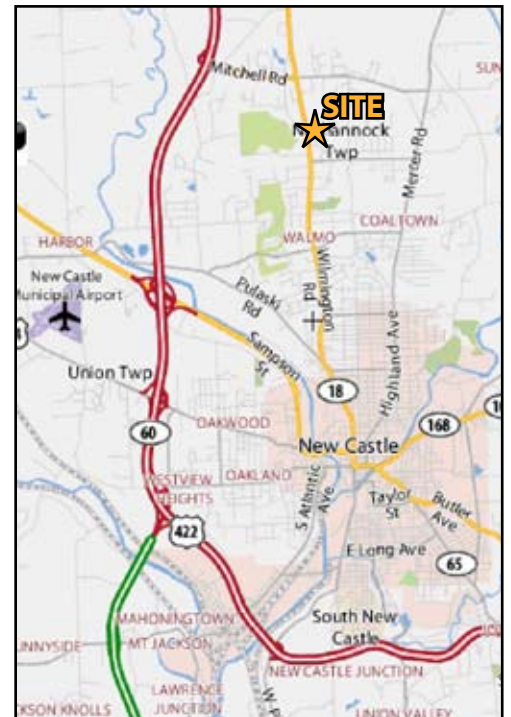
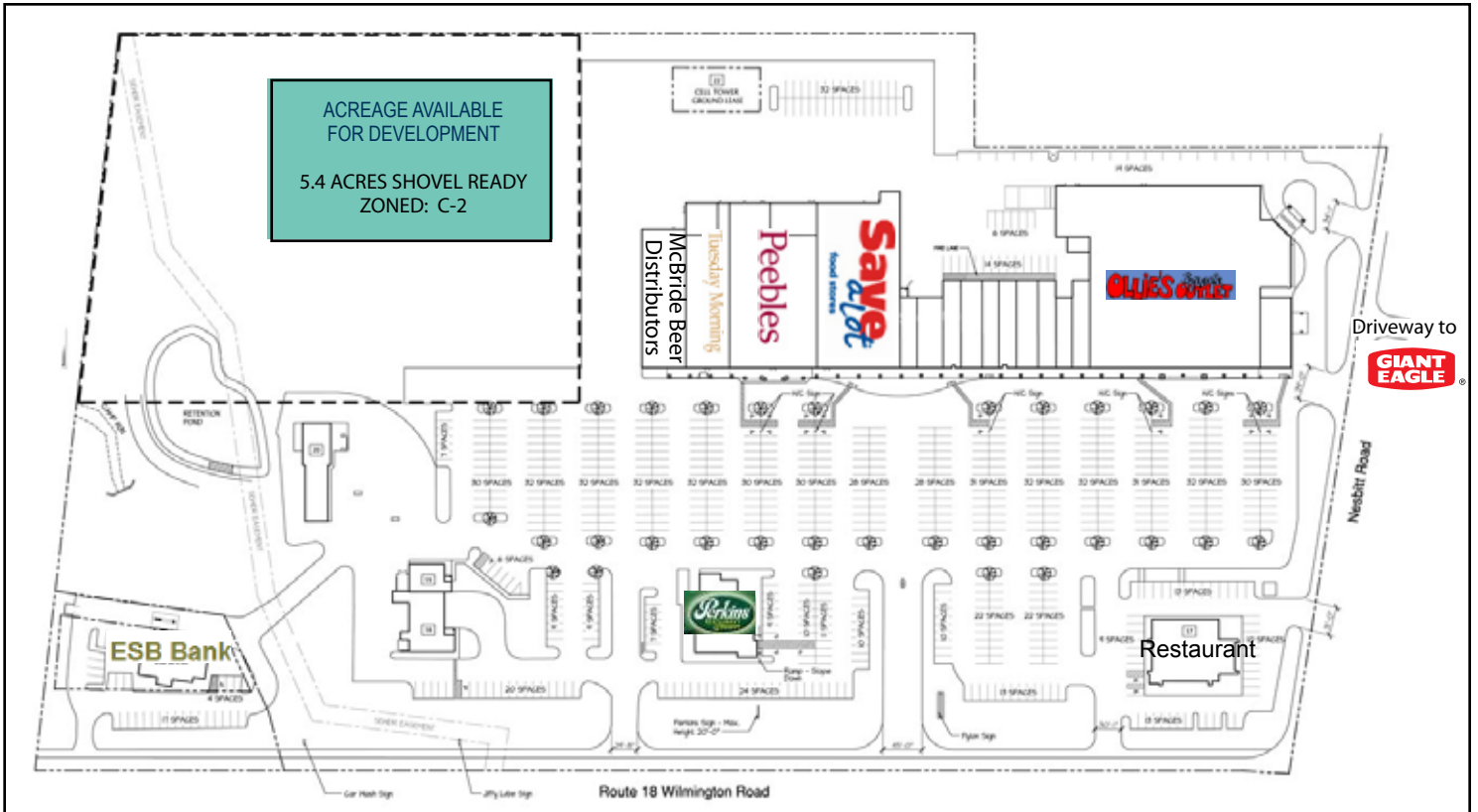
Office | Industrial | Retail | Investment | Consulting

Oxford Realty Services

One Oxford Centre | 301 Grant Street | Suite 400  
Pittsburgh, PA, 15219

[www.oxfordrealtyservices.com](http://www.oxfordrealtyservices.com)

# Field Club Commons Shopping Center



Although all information furnished regarding property for sale, rental or financing is from sources deemed reliable, such information has not been verified, and no express representation is made nor is any to be implied as to the accuracy thereof, and it is submitted subject to errors, omissions, change of price, rental or other conditions, prior sale, lease or financing, or withdrawal without notice. Rental terms and all dimensions are approximate and specifications are subject to change without notice. Oxford Realty Services, Inc., an independent real estate services company.



Office | Industrial | Retail | Investment | Consulting