

Brentwood Professional Building

4411 Stilley Road, Pittsburgh, PA 15227



Building **Size**

- 22,020 RSF

Available **Premises**

- 1,190 RSF - 2nd Floor

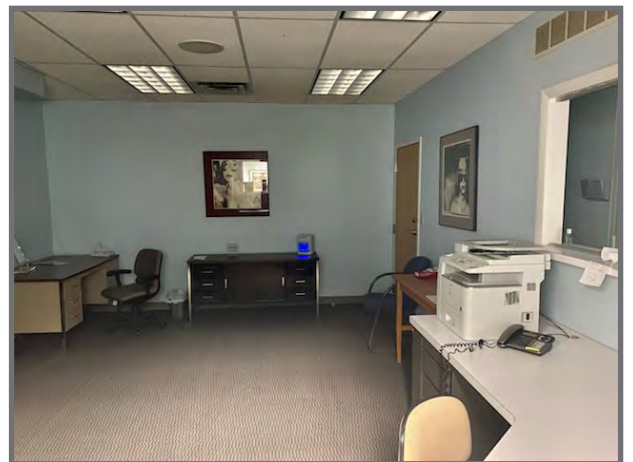
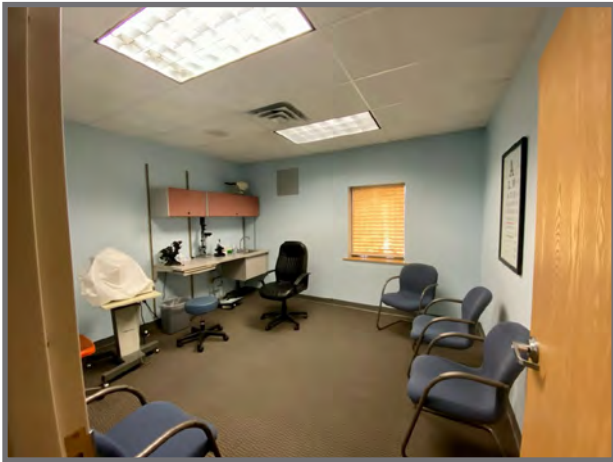
Lease **Rate**

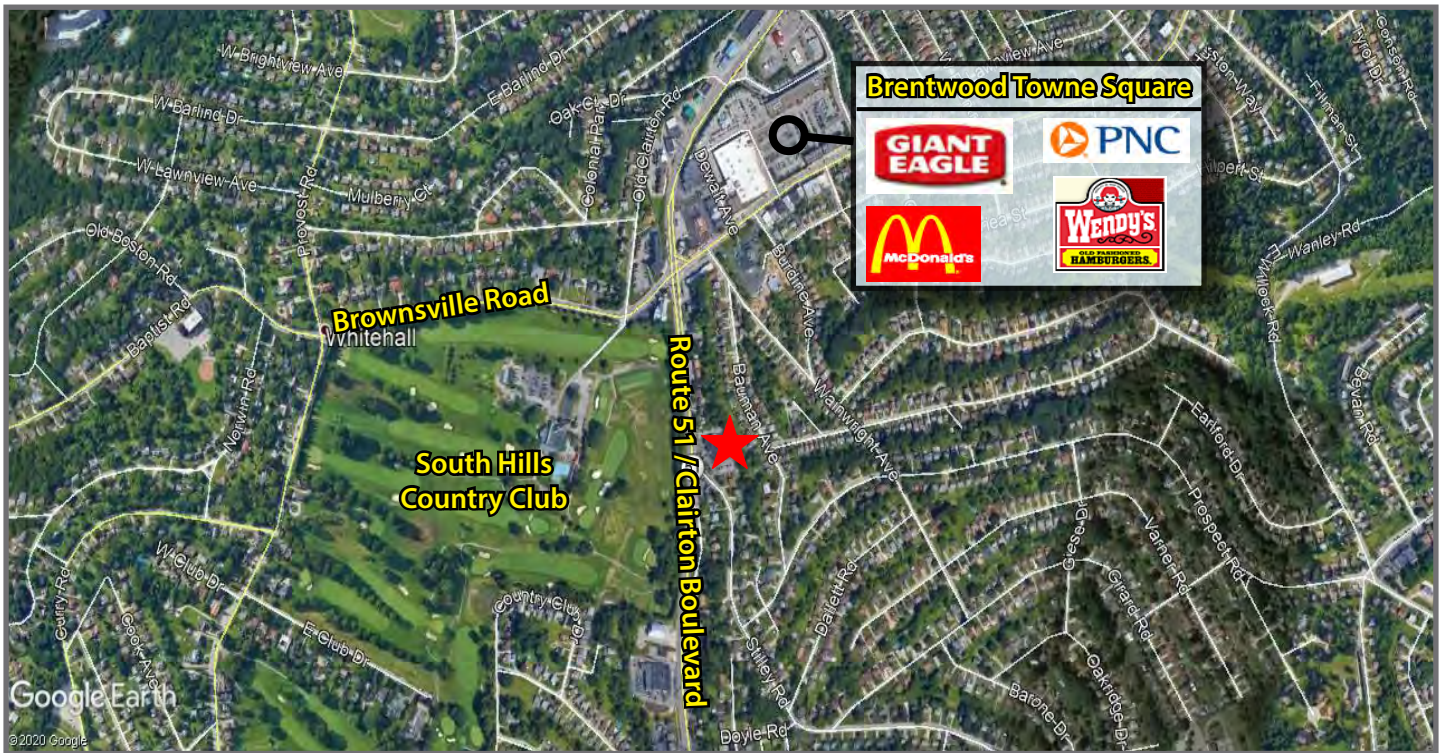
- \$16.75/RSF - Full Service

Property **Highlights**

- Three (3) story office building located at the intersection of Stilley Road and Route 51 (Clairton Boulevard)
- On-site free parking
- Monument Signage
- Second generation medical space with 2 exam rooms
- Flexible lease terms
- Steps from shopping, dining, and banking within Brentwood Towne Square

Second Floor - 1,190 RSF





For more information please contact:

Joseph F. Tosi

Senior Vice President

Oxford Realty Services, Inc.

412.261.0200, ext 3471

jtosi@oxfordrealtyservices.com

Taylor N. Iaboni

Associate

Oxford Realty Services, Inc.

412.261.0200, ext 3493

tiaboni@oxfordrealtyservices.com

OXFORD

REALTY SERVICES, INC.

2545 Railroad Street - Suite 300

Pittsburgh, PA 15222

www.oxfordrealtyservices.com

Although all information furnished regarding property for sale, rental or financing is from sources deemed reliable, such information has not been verified, and no express representation is made nor is any to be implied as to the accuracy thereof, and it is submitted subject to errors, omissions, change of price, rental or other conditions, prior sale, lease or financing, or withdrawal without notice. Rental terms and all dimensions are approximate and specifications are subject to change without notice. Oxford Realty Services, Inc., an independent real estate services company.